



WELLBORN
CABINET™

START WITH A BEAUTIFUL FINISH

 MADE IN THE USA

Our Vision

The Wellborn family will be the most valued provider of permanent home cabinetry designed for a lifetime of gracious living.

Since 1961, Wellborn Cabinet, Inc. has been manufacturing quality kitchen and bath cabinetry in Ashland, Alabama. It all began in a small cabinet shop to build cabinets for the local markets. Since that time, Wellborn has become a state of the art manufacturing facility of over 1.8 million square feet that combines some of the most advanced technology systems in the industry with over 59 years of acquired knowledge in high quality cabinetry craftsmanship.

Our Quality



The entire Wellborn family and their employees take great pride in producing quality products. Our Quality Control Team includes over 100 employees dedicated to ensuring the quality of your cabinetry. Our certified inspectors manage over 30 quality checkpoints throughout the facility.



Premier^{SERIES} Estate^{Series} ELEGANT BATH™ Aspire^{CABINETS}

Design Inspirations	3-13	Metal Door Styling.....	50-51
Wood Doors		Finishes.....	50
Overlay Styling	14-19	Finish Techniques.....	34-36
Inset Styling	20-23	WellGuard Finish System.....	36
Estate Series & Elegant Bath.....	20-22	The Beauty of Door Materials	37
Premier Series.....	23	Special Effects	38-39
Finishes.....	24-31	Premier Series Construction.....	53
Medium Density Fiberboard (MDF) Door Styling	32	Estate Series Construction.....	54
Finishes.....	33	Aspire Construction	56-57
Regal Door Styling.....	48	Door Options	55
Finishes.....	48		
Brilliant Door Styling.....	49		
Finishes.....	49		



select^{SERIES} Aspire^{CABINETS}

Wood Doors	
Overlay Styling	40-41
Finishes.....	42-45
Medium Density Fiberboard (MDF) Door Styling	46
Finishes.....	47
Laminate Door Styling.....	47
Colors.....	47
Select Construction	52



Options

Every Room. Every Home	58-59	Mouldings, Wainscot, Islands & Hoods	63
Illuminate Your Life	60	Details Add Function	64-65
Touch to Lift, Light, Open, Close.....	61	Our Commitment to the Environment.....	66
Decorative Doors	62	Our Warranty Program	67



Wellborn Cabinet offers an extensive selection of door styles, door materials and finish combinations designed for individual style and everyday luxury. Whether building or remodeling your home, Wellborn is the best choice for all your cabinet needs. "May your home be a place where friends meet, family gather and love grows."





Courtesy Coastal Living, a division of Time Inc. Lifestyle Group, photograph by Amy Neunsinger. Coastal Living is a registered trademark of Time Inc. Lifestyle Group.



Registered trademark of Time Inc. Lifestyle Group and is used with permission.



Davenport

Left:
Wall Cabinets: Davenport Square Maple Inset,
Glacier
Base Cabinets and Island: Davenport Square Maple
Inset, ColorInspire, NY State of Mind BM 805

Right: Davenport Square Maple, Glacier



Winslow

Maple, Divinity and
SW7521 Dormer
Brown



Hanover

Hanover Maple Inset, Shale





Hanover

Cabinets: Hanover Maple, Bright White
Island: Hanover Maple, Drift
Premier Series



Amelia

Maple, Aqua





Chelsea

Cabinets: Chelsea Maple, Suede
Island: Chelsea Maple, Mink Gray
Accent Cabinets: Antigua Maple, Shale and
Chelsea Maple Inset, Shale





Wall Cabinets:

Morristown

Regal Door Collection
Husk Alder
Aspire Luxe Series

Base Cabinets:

Arcadia

Regal Door Collection
Sorrel Alder
Aspire Luxe Series

Island:

Midtown

Brilliant Door Collection
Bronzed Leather
Aspire Luxe Series



Vanity Cabinets:

Bel-Air

Regal Door Collection
Biscotti Cherry

Vanity Cabinets:

Arcadia

Regal Door Collection
Terra Oak

Vista

Metal Door Collection
Chrome with Olive Matte
Backpainted Glass

Sterling

Metal Door Collection
Chrome with Mari
Seamless Resin Insert



Vanity Cabinet:
Melrose
Wood Door Collection
Mint

Drawers and Island:
Bel-Air
Regal Door Collection
Cotton Pine





Cabinets:

Midtown

Brilliant Door Collection
Matte Ebony

Island and Wall Cabinets:

Bel-Air

Regal Door Collection
Barnwood Oak



Amelia
Maple Aqua
SDF Standard
MPL



Amelia
Maple Dove
CDF Option
MPL



Antigua
Maple Olive
SDF Standard
CHY/MPL/OAK/HKY



Antigua
Maple Glacier
CDF Option
CHY/MPL/OAK/HKY

Drawer Front Options

SDF Slab Drawer Front
CDF Classic Drawer Front
HGDF Horizontal Grain Drawer Front

Door Material Options

CHY Cherry
CCH Character Cherry
MPL Maple
CMP Character Maple
OAK Oak
HKY Hickory

❖ Not Available in Aspire



Barcelona
Oak Medium
HGDF Standard
OAK



Bridgeport
Maple Gray Mist
SDF Option
CHY/MPL/OAK/HKY



Bridgeport
Maple Olive
CDF Standard
CHY/MPL/OAK/HKY



Bristol
Oak Ginger
SDF Standard
CHY/CCH/MPL/CMP/OAK/HKY



Bristol
Hickory Tensile
CDF Option
CHY/CCH/MPL/CMP/OAK/HKY



Charleston
Cherry Blush
SDF Option
CHY/MPL/OAK/HKY



Charleston
Maple Aqua
CDF Standard
CHY/MPL/OAK/HKY



Chelsea
Maple Dove
SDF Option
CHY/MPL/OAK/HKY



Chelsea
Cherry Natural
CDF Standard
CHY/MPL/OAK/HKY



Cortland
Oak Light
SDF Standard
CHY/CCH/MPL/CMP/OAK/HKY

Wood Doors Overlay Styling



Cortland
Maple Willow Java
CDF Option
CHY/CCH/MPL/CMP/OAK/HKY



Davenport Arch
Maple Gray Mist
SDF Standard
CHY/MPL/OAK/HKY



Davenport Arch
Maple Sandstone
CDF Option
CHY/MPL/OAK/HKY



Davenport Square
Maple Oatmeal Slate
SDF Standard
CHY/MPL/OAK/HKY



Davenport Square
Maple Glacier Pewter
CDF Option
CHY/MPL/OAK/HKY



Essex
Maple Cranberry Charcoal
SDF Standard
MPL/OAK/HKY



Galena Square
Maple Glacier
SDF Option
CHY/MPL/OAK/HKY



Galena Square
Maple Olive
CDF Standard
CHY/MPL/OAK/HKY



Geneva
Oak Natural
SDF Option
CHY/MPL/OAK



Geneva
Cherry Dark
CDF Standard
CHY/MPL/OAK



Hanover
Character Maple Oatmeal
SDF Standard
CHY/CCH/MPL/CMP/OAK/HKY



Hanover
Maple Glacier Java
CDF Option
CHY/CCH/MPL/CMP/OAK/HKY



Harbour
Maple Mint
SDF Standard
CHY/MPL/OAK/HKY



Harbour
Maple Sandstone Slate
CDF Option
CHY/MPL/OAK/HKY



Harmony ♦
Maple Crème Mocha
SDF Option
CHY/MPL

Wood Doors Overlay Styling



Harmony ❖
Maple Dove Java
CDF Standard
CHY/MPL



Hawthorne
Cherry Garnet Java
CDF Standard
CHY/MPL



Henlow Arch
Cherry Autumn Spice Charcoal
SDF Standard
CHY/MPL/OAK/HKY



Henlow Arch
Maple Divinity
CDF Option
CHY/MPL/OAK/HKY



Henlow Square
Oak Honey Java
SDF Standard
CHY/MPL/OAK/HKY



Henlow Square
Maple Shadow
CDF Option
CHY/MPL/OAK/HKY



Lexington
Maple Natural
SDF Standard
CHY/MPL/OAK/HKY



Lexington
Maple Light
CDF Option
CHY/MPL/OAK/HKY



Madison Arch
Maple Crème
SDF Standard
CHY/CCH/MPL/CMP/OAK/HKY



Madison Arch
Maple Blush
CDF Option
CHY/CCH/MPL/CMP/OAK/HKY



Madison Square
Character Maple Natural
SDF Standard
CHY/CCH/MPL/CMP/OAK/HKY



Madison Square
Cherry Garnet Charcoal
CDF Option
CHY/CCH/MPL/CMP/OAK/HKY



Melrose
Maple Mink Gray
SDF Option
CHY/MPL/OAK/HKY



Melrose
Cherry Shale
CDF Standard
CHY/MPL/OAK/HKY



Messina
Maple Glacier
SDF Option
CHY/MPL/OAK/HKY

Wood Doors Overlay Styling



Messina
Cherry Saffron
CDF Standard
CHY/MPL/OAK/HKY



Milan
Cherry Shale
SDF Standard
CHY/MPL/OAK



Milan
Maple Willow
HGDF Option ❖
CHY/MPL/OAK



Modesto
Maple Honey Java
SDF Option
CHY/MPL/OAK/HKY



Modesto
Maple Blush Java
CDF Standard
CHY/MPL/OAK/HKY



Monterey
Maple Divinity
SDF Option
CHY/MPL



Monterey
Maple Drift
CDF Standard
CHY/MPL



Napa
Cherry Sienna
SDF Option
CHY/MPL



Napa
Maple Light
CDF Standard
CHY/MPL



New Haven
Oak Dark
SDF Standard
CHY/MPL/OAK/HKY



New Haven
Maple Bleu Java
CDF Option
CHY/MPL/OAK/HKY



Prairie
Hickory Natural
SDF Standard
CHY/MPL/OAK/HKY



Prairie
Cherry Sienna Charcoal
CDF Option
CHY/MPL/OAK/HKY



Richmond
Maple Crème
SDF Option
CHY/MPL/OAK/HKY



Richmond
Maple Hazelnut
CDF Standard
CHY/MPL/OAK/HKY

Wood Doors Overlay Styling



Rose Hall Arch ❖
Hickory Cranberry
SDF Standard
CHY/CCH/MPL/CMP/OAK/HKY



Rose Hall Square ❖
Oak Divinity Java
SDF Standard
CHY/CCH/MPL/CMP/OAK/HKY



Sandia
Cherry Medium
SDF Standard
CHY/MPL/OAK/HKY



Sandia
Maple Natural Slate
CDF Option
CHY/MPL/OAK/HKY



Savannah
Oak Light
CDF Standard
CHY/MPL/OAK



Seville Arch
Maple Bleu
SDF Standard
CHY/CCH/MPL/CMP/OAK/HKY



Seville Arch
Character Cherry Saffron
CDF Option
CHY/CCH/MPL/CMP/OAK/HKY



Seville Square
Maple Evergreen Java,
Olde World
SDF Standard
CHY/CCH/MPL/CMP/OAK/HKY



Seville Square
Oak Hazelnut
CDF Option
CHY/CCH/MPL/CMP/OAK/HKY



Sonoma
Maple Oatmeal
SDF Option
CHY/MPL



Sonoma
Maple Willow Slate
CDF Standard
CHY/MPL



Sydney
Maple Dove Java, Vintage
CDF Standard
CHY/MPL



Venice
Cherry Blush
SDF Option
CHY/MPL



Venice
Maple Honey Java
CDF Standard
CHY/MPL



Vienna
Maple Caramel
SDF Option
CHY/MPL/OAK/HKY

Wood Doors Overlay Styling



Vienna
Maple Cranberry
CDF Standard
CHY/MPL/OAK/HKY



Wellington
Maple Oyster White
SDF Option
CHY/MPL/OAK/HKY



Wellington
Cherry Saffron
CDF Standard
CHY/MPL/OAK/HKY



Winslow
Oak Light Java
SDF Option
CHY/MPL/OAK/HKY



Winslow
Maple Divinity Java
CDF Standard
CHY/MPL/OAK/HKY

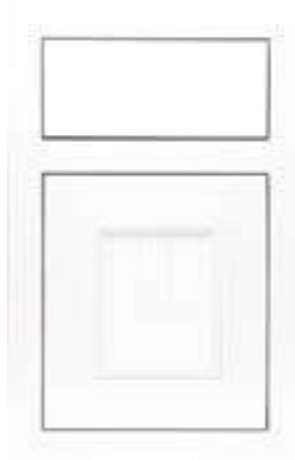
Wood Doors Inset Styling



Antigua Inset
Maple Light, B
SDF Standard
CHY/MPL/OAK/HKY



Antigua Inset
Maple Natural, NB
CDF Option
CHY/MPL/OAK/HKY



Bridgeport Inset
Maple, Bright White, NB
SDF Standard
CHY/CCH/MPL/CMP/OAK/HKY



Bridgeport Inset
Maple Mint, NB
CDF Option
CHY/CCH/MPL/CMP/OAK/HKY

Drawer Front Options

SDF Slab Drawer Front
CDF Classic Drawer Front

Face Frame Options

B Beaded
NB Non-Beaded

Door Material Options

CHY Cherry
CCH Character Cherry
MPL Maple
CMP Character Maple
OAK Oak
HKY Hickory



Bristol Inset
Hickory Natural, NB
SDF Standard
CHY/CCH/MPL/CMP/OAK/HKY



Bristol Inset
Character Cherry Cocoa
Java, NB
CDF Option
CHY/CCH/MPL/CMP/OAK/HKY



Charleston Inset
Maple Natural, B
SDF Standard
CHY/CCH/MPL/CMP/OAK/HKY



Charleston Inset
Cherry Saffron Java, B
CDF Option
CHY/CCH/MPL/CMP/OAK/HKY



Cortland Inset
Character Maple Oyster
White, NB
SDF Standard
CHY/CCH/MPL/CMP/OAK/HKY



Cortland Inset
Character Maple Willow
Java, NB
CDF Option
CHY/CCH/MPL/CMP/OAK/HKY



Davenport Square Inset
Oak Light Java, NB
SDF Standard
CHY/CCH/MPL/CMP/OAK/HKY



Davenport Square Inset
Character Cherry Dark
Charcoal, NB
CDF Option
CHY/CCH/MPL/CMP/OAK/HKY



Galena Square Inset
Maple Aqua, NB
SDF Option
CHY/MPL/OAK/HKY



Galena Square Inset
Maple Gray Mist, NB
CDF Option
CHY/MPL/OAK/HKY

Wood Doors Inset Styling



Hanover Inset
Maple Crème, B
SDF Standard
CHY/CCH/MPL/CMP/OAK/HKY



Hanover Inset
Maple Dove, NB
CDF Option
CHY/CCH/MPL/CMP/OAK/HKY



Harbour Inset
Maple Pebble, Vintage, B
SDF Standard
CHY/CCH/MPL/CMP/OAK/HKY



Harbour Inset
Cherry Blush, B
CDF Option
CHY/CCH/MPL/CMP/OAK/HKY



Henlow Square Inset
Maple Ginger Java,
Antique, NB
SDF Standard
CHY/CCH/MPL/CMP/OAK/HKY



Henlow Square Inset
Cherry Blush, B
CDF Option
CHY/CCH/MPL/CMP/OAK/HKY



Lexington
Maple Hazelnut, NB
SDF Option
CHY/MPL/OAK/HKY



Lexington
Maple Sable, NB
CDF Option
CHY/MPL/OAK/HKY



Madison Square Inset
Character Maple Hazelnut
Charcoal, B
SDF Standard
CHY/CCH/MPL/CMP/OAK/HKY



Madison Square Inset
Maple Light, B
CDF Option
CHY/CCH/MPL/CMP/OAK/HKY



Melrose Inset
Maple Mint, NB
SDF Standard
CHY/CCH/MPL/CMP/OAK/HKY



Melrose Inset
Maple Glacier, NB
CDF Option
CHY/CCH/MPL/CMP/OAK/HKY



Messina Inset
Maple Olive, B
SDF Standard
CHY/CCH/MPL/CMP/OAK/HKY



Messina Inset
Hickory Natural, B
CDF Option
CHY/CCH/MPL/CMP/OAK/HKY



Modesto Inset
Character Maple Oatmeal,
NB
SDF Standard
CHY/CCH/MPL/CMP/OAK/HKY

Wood Doors Inset Styling



Modesto Inset
Maple Willow, B
CDF Option
CHY/CCH/MPL/CMP/OAK/HKY



New Haven Inset
Cherry Garnet, B
SDF Standard
CHY/MPL/OAK/HKY



New Haven Inset
Maple Dove, B
CDF Option
CHY/MPL/OAK/HKY



Richmond Inset
Maple Oatmeal Charcoal, B
SDF Standard
CHY/CCH/MPL/CMP/OAK/HKY



Richmond Inset
Maple Bleu, B
CDF Option
CHY/CCH/MPL/CMP/OAK/HKY



Sandia Inset
Oak Drift, NB
SDF Standard
CHY/CCH/MPL/CMP/OAK/HKY



Sandia Inset
Maple Light, B
CDF Option
CHY/CCH/MPL/CMP/OAK/HKY



Vienna Inset
Cherry Espresso, NB
SDF Standard
CHY/CCH/MPL/CMP/OAK/HKY



Vienna Inset
Maple Sandstone, B
CDF Option
CHY/CCH/MPL/CMP/OAK/HKY



Wellington Inset
Cherry Light Charcoal, B
SDF Standard
CHY/MPL/OAK/HKY



Winslow Inset
Maple Mint, B
SDF Standard
CHY/CCH/MPL/CMP/OAK/HKY



Winslow Inset
Maple Willow, B
CDF Option
CHY/CCH/MPL/CMP/OAK/HKY

Premier Series Wood Doors Inset Styling



Davenport Square Inset
Oak Light Java, NB
SDF Standard
CHY/MPL/OAK/HKY



Davenport Square Inset
Character Cherry Dark
Charcoal, NB
CDF Option
CHY/MPL/OAK/HKY



Hanover Inset
Maple Crème, NB
SDF Standard
CHY/CCH/MPL/CMP/OAK/HKY



Hanover Inset
Maple, Dove, NB
CDF Option
CHY/CCH/MPL/CMP/OAK/HKY

Drawer Front Options
SDF Slab Drawer Front
CDF Classic Drawer Front

Door Material Options
CHY Cherry
CCH Character Cherry
MPL Maple
CMP Character Maple
OAK Oak
HKY Hickory



Henlow Square Inset
Maple Ginger Java,
Antique, NB
SDF Standard
CHY/MPL/OAK/HKY



Henlow Square Inset
Cherry Saffron, NB
CDF Option
CHY/MPL/OAK/HKY

Cherry and Character Cherry Finishes

All Cherry and Character Cherry door styles are available in color selections which present unique choices for you. This color palette is created with a variety of beautiful stained finishes, many of which can be enhanced with a glaze highlight. Finish Techniques can also be applied to create a treasured look.

Stains



Natural



Saffron



Light



Ginger



Medium



Caramel



Dark



Sable



Autumn Spice



Shale



Drift



Gauntlet



Saddle



Sienna



Blush



Suede



Espresso



Garnet



Shadow

Stains with Glazes



Natural Slate



Natural Java



Saffron Slate



Saffron Java



Light Slate



Light Charcoal



Ginger Java



Ginger Charcoal



Nutmeg Java



Caramel Java



Cocoa Java



Sable Charcoal



Dark Charcoal



Autumn Spice Charcoal



Shale Granite



Shale Mocha



Drift Pewter



Drift Slate



Drift Java



Gauntlet Charcoal



Gauntlet Java



Saddle Charcoal



Saddle Java



Sienna Charcoal



Blush Charcoal

Stains with Glazes



Blush Java



Suede Charcoal



Garnet Java



Garnet Charcoal



Shadow Pewter



Shadow Charcoal



Evergreen Java

Finish Techniques

The Finish Techniques may not be displayed in wood species on these pages.



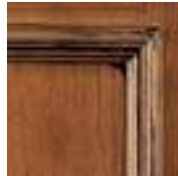
Vintage



Antique



Olde World

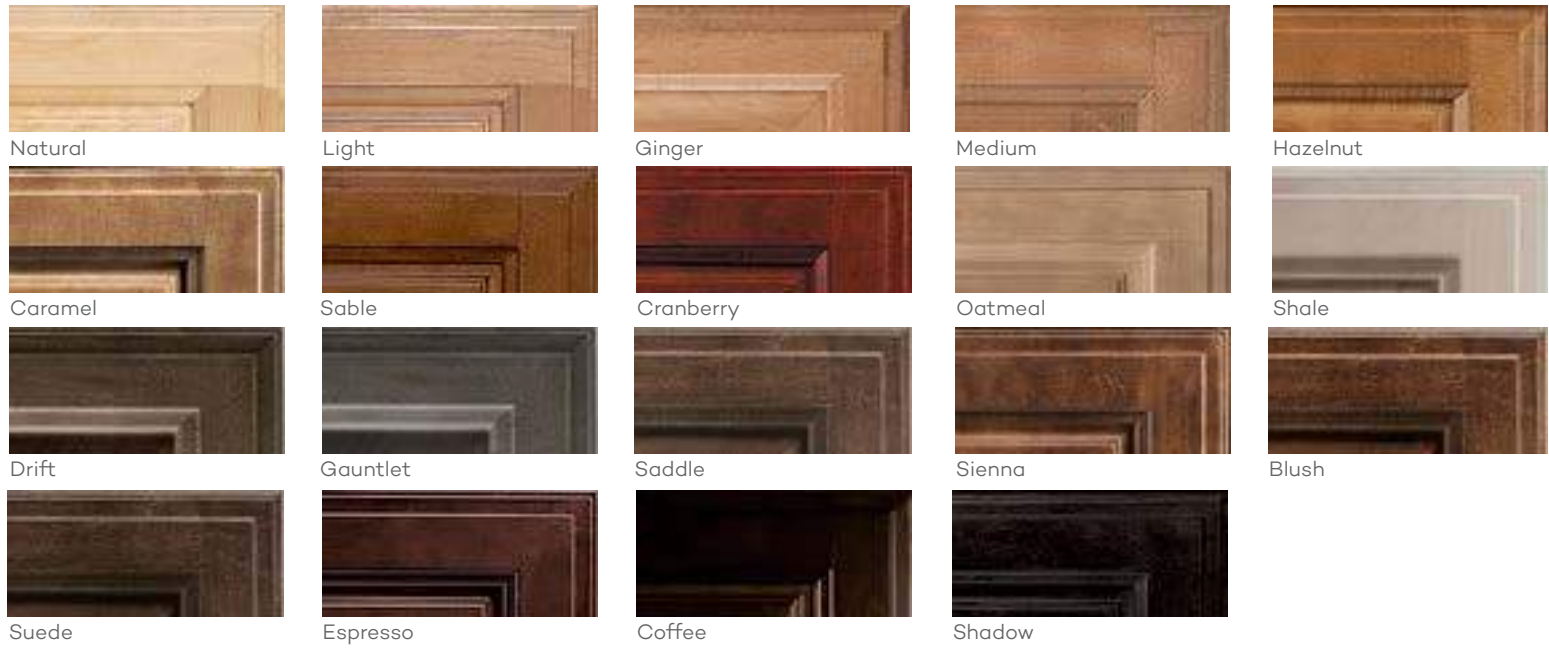


Heirloom

Maple and Character Maple Finishes

All Maple and Character Maple door styles are available in color selections which present unique choices for you. This color palette is created with both stained and painted finishes, many of which can be enhanced with a glaze highlight and Finish Techniques.

Stains



Stains with Glazes



Paints



Paints with Glazes



ColorInspire

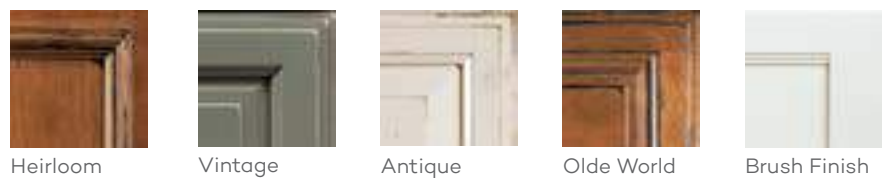
ColorInspire offers a broad selection of colors from the extensive paint programs of Sherwin Williams, Benjamin Moore and Valspar. Wellborn Cabinet, Inc. also offers glazing and finish technique options for even more uniqueness. We invite you to be yourself, be creative and be inspired.

** Available only with Finish Techniques
 ♦ Not Available on Character Maple

ColorInspire is available on Maple and MDF door styles in Premier Series, Estate Series, Elegant Bath and Aspire.

Finish Techniques

The Finish Techniques may not be displayed in wood species on these pages.



Oak Finishes

Wellborn's color palette of stains and paints transform the beautiful grains of Oak. This color palette is created with both stained and painted finishes, many of which can be enhanced with a glaze highlight and Finish Techniques.

Stains



Natural*



Light*



Ginger



Medium



Hazelnut



Caramel



Dark



Sable



Cranberry



Shale



Drift



Gauntlet



Saddle



Sienna



Blush



Suede



Espresso



Coffee



Shadow

Stains with Glazes



Natural Slate



Honey Java



Light Slate



Light Java



Ginger Java



Ginger Charcoal



Hazelnut Charcoal



Nutmeg Java



Caramel Java



Cocoa Java



Sable Charcoal



Cranberry Charcoal



Shale Granite



Shale Mocha



Drift Pewter



Drift Slate



Drift Java



Gauntlet Charcoal



Gauntlet Java



Saddle Charcoal



Saddle Java



Sienna Charcoal



Blush Charcoal



Blush Java



Suede Charcoal



Shadow Pewter



Shadow Charcoal



Evergreen Java

Paints



Bright White



Oyster White



Glacier



Divinity



Crème



Sandstone



Pebble



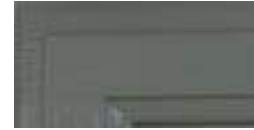
Gray Mist



Dove



Mink Gray



Willow



Aqua



Bleu



Mint



Olive



Midnight**



Onyx

Paints with Glazes



Bright White Java



Oyster White Granite



Oyster White Java



Glacier Pewter



Glacier Java



Divinity Java



Crème Slate



Crème Mocha



Sandstone Pewter



Sandstone Slate



Pebble Pewter



Pebble Java



Gray Mist Granite



Gray Mist Java



Dove Pewter



Dove Slate



Dove Java



Mink Gray Granite



Mink Gray Java



Willow Slate



Willow Java



Aqua Granite



Aqua Java



Bleu Java



Mint Granite



Mint Java



Olive Pewter



Olive Mocha

Nature Collection Paints



Tensile



Forge

Finish Techniques

The Finish Techniques may not be displayed in wood species on these pages.



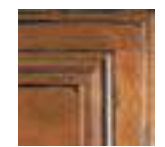
Heirloom



Vintage



Antique



Olde World

** Available only with Finish Techniques

Hickory Finishes

Wellborn offers a color palette of stains and painted finishes in Hickory that complements many design styles. Many of the stains and painted finishes can be enhanced with a glaze highlight and Finish Techniques.

Stains



Natural



Light



Ginger



Medium



Hazelnut



Caramel



Dark



Sable



Cranberry



Shale



Drift



Gauntlet



Saddle



Sienna



Blush



Suede



Espresso



Coffee



Shadow

Stains with Glazes



Natural Slate



Honey Java



Light Slate



Light Java



Ginger Java



Ginger Charcoal



Hazelnut Charcoal



Nutmeg Java



Caramel Java



Cocoa Java



Sable Charcoal



Cranberry Charcoal



Shale Granite



Shale Mocha



Drift Pewter



Drift Slate



Drift Java



Gauntlet Charcoal



Gauntlet Java



Saddle Charcoal



Saddle Java



Sienna Charcoal



Blush Charcoal



Blush Java



Suede Charcoal



Shadow Pewter



Shadow Charcoal



Evergreen Java

Paints



Bright White



Oyster White



Glacier



Divinity



Crème



Sandstone



Pebble



Gray Mist



Dove



Mink Gray



Willow



Aqua



Bleu



Mint



Olive



Midnight**



Onyx

Paints with Glazes



Bright White Java



Oyster White Granite



Oyster White Java



Glacier Pewter



Glacier Java



Divinity Java



Crème Slate



Crème Mocha



Sandstone Pewter



Sandstone Slate



Pebble Pewter



Pebble Java



Gray Mist Granite



Gray Mist Java



Dove Pewter



Dove Slate



Dove Java



Mink Gray Granite



Mink Gray Java



Willow Slate



Willow Java



Aqua Granite



Aqua Java



Bleu Java



Mint Granite



Mint Java



Olive Pewter



Olive Mocha

Nature Collection Paints



Tensile



Forge

Finish Techniques

The Finish Techniques may not be displayed in wood species on these pages.



Heirloom



Vintage



Antique



Olde World

** Available only with Finish Techniques

Medium Density Fiberboard (MDF) Door Styling

■ Available only in Aspire

Drawer Front Options

SDF Slab Drawer Front
CDF Classic Drawer Front



Alto
Divinity
SDF Option
MDF



Belmont
Dove Slate
SDF Option
MDF



Belmont
Olive Mocha
CDF Standard
MDF



Bishop
Willow
SDF Standard
MDF



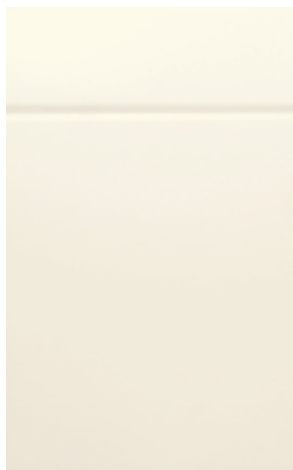
Bishop
Pebble
CDF Option
MDF



Hartford
Pebble Java
SDF Option
MDF



Hartford
Glacier
CDF Standard
MDF



Lido ■
Divinity
SDF Standard
MDF



Saybrook
Gray Mist
SDF Standard
MDF



Saybrook
Mint
CDF Option
MDF



Trestle
Sandstone
SDF Standard
MDF



Trestle
Divinity Java
CDF Option
MDF

WellCore

Medium Density Fiberboard (MDF)

WellCore is our line of medium density fiberboard doors. It is an engineered wood product made by breaking down wood and forming panels by applying high temperature, adhesives and pressure.

WellCore is a high quality option for painted cabinetry. WellCore has very consistent surface properties which means paint will lay smoothly and create a great bond on flat surfaces without the characteristic properties that can show when natural woodgrains receive paint.

WellCore also has strong dimensional stability which makes it less susceptible to climate, coastal, or other atmospheric changes. Wellborn makes all WellCore door styles from Super-Refined MDF2 to provide better quality from the start for your beautiful painted cabinetry.

MDF Finishes

Wellborn offers a variety of paints for you to choose from to add style to your Medium Density Fiberboard door.

Paints



Bright White



Oyster White



Glacier



Divinity



Crème



Sandstone



Pebble



Gray Mist



Dove



Mink Gray



Willow



Aqua



Bleu



Mint



Olive



Onyx

Paints with Glazes



Bright White Java



Oyster White Granite



Oyster White Java



Glacier Pewter



Glacier Java



Divinity Java



Crème Slate



Crème Mocha



Sandstone Pewter



Sandstone Slate



Pebble Pewter



Pebble Java



Gray Mist Granite



Gray Mist Java



Dove Pewter



Dove Slate



Dove Java



Mink Gray Granite



Mink Gray Java



Willow Slate



Willow Java



Aqua Granite



Aqua Java



Bleu Java



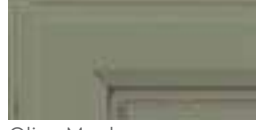
Mint Granite



Mint Java



Olive Pewter



Olive Mocha



ColorInspire

ColorInspire offers a broad selection of colors from the extensive paint programs of Sherwin Williams, Benjamin Moore and Valspar. Wellborn Cabinet, Inc. also offers glazing and finish technique options for even more uniqueness. We invite you to be yourself, be creative and be inspired.

ColorInspire is available on Maple and MDF door styles in Premier Series, Estate Series, Elegant Bath, and Aspire.



Vintage

Time Worn Appearance

- Rub Through
- Glaze Required for Maple, Character Maple, Oak and Hickory
- Glaze Optional for Cherry and Character Cherry



Heirloom

Family Heritage

- Burnishing
- Small Dents
- Worm Holes
- Glaze Required for Maple, Character Maple, Oak and Hickory
- Available on Stains and Stains with Glazes on Cherry and Character Cherry



Antique

Aged With Care

- Burnishing
- Rub Through
- Small Dents
- Worm Holes
- Glaze Required for Maple, Character Maple, Oak and Hickory
- Glaze Optional for Cherry and Character Cherry



Olde World

Artisan Finish

- Burnishing
- Rub Through
- Worm Holes
- Dry Brush Glazing
- Carved Edges
- Small to Medium Dents
- Rasping
- Glaze Required for Maple, Character Maple, Oak and Hickory
- Glaze Optional for Cherry and Character Cherry



Brush Finish

Hint of Brush Stroke

- Hand applied glaze in a subtle brush stroke overlaying the paint providing a depth to the finish not seen with standard glazing
- Available on Maple
- Brush glaze color is Fawn, a very light tan color
- Available on Bright White, Crème, Divinity, Glacier, Oyster White, Pebble and Sandstone Paints on Maple
- Not available with any other glaze or Finish Technique



ColorInspire™

Discover Your Color Inspiration

ColorInspire offers a broad selection of colors from the extensive paint programs of Sherwin Williams, Benjamin Moore and Valspar. Wellborn Cabinet, Inc. also offers glazing and finish technique options for even more uniqueness. We invite you to be yourself, be creative and be inspired.

ColorInspire is available on Maple and MDF door styles in Premier Series, Estate Series, Elegant Bath and Aspire.

Wellborn takes great pride and care with the finishing of our kitchen furniture. Years of research partnered with development through Valspar have resulted in The WellGuard Finishing System®— a 24-step superb finishing process. The WellGuard Finishing System has been tested against 17 common household chemicals and food products and passed beautifully. Those agents include: gasoline, water, coffee, olive oil, ammonia, fly spray, detergent, soaps, alcohol, mustard, crayons, shoe polish, tea, vinegar, dye, citric acid and beet juice. Shown below are some of the key quality aspects of our finishing process which all of our stained finishes receive.



1. **Hand select** the finest wood
2. Manual **hand sanding line** for a smooth consistent finish and cross grain elimination
3. Dust particles removed and **quality inspected**
4. A sap stain is applied to **tone and balance** the color and grain
5. Grain enhancing dye stain adds color depth
6. **Hand rubbed** wiping stain applied for complete color coverage
7. The surfaces are air dried and **inspected** for color
8. The first coat of **durable catalyzed sealer** is applied
9. **Oven-cured** providing a tough, durable, baked-on finish
10. **Hand sanded** with fine grit sandpaper and quality inspected
11. The second coat of catalyzed **melamine enriched** sealer is applied
12. Our products are **oven-cured** a second time
13. **Hand sanded** again to provide a smooth surface for topcoat
14. Some finishes receive a **shading** technique
15. The surface is again **hand sanded**
16. **Hand wiped** with tack cloth in preparation for final topcoat
17. **Inspected** for consistency of shading or glazing



18. A **third coat** of sealer is applied
19. The surfaces are **hand sanded** again
20. Resin blend **melamine enriched** topcoat is applied
21. Conversion varnish topcoat is oven cured, creating a tough, **baked-on finish**
22. Personally **quality inspected** using a sheen meter
23. **UV drying station** completes the curing process
24. Finished wood components are stored in **individual staging racks** to prevent scratches

Finish Techniques

Wellborn has several Finish Techniques that create different levels of worn appearances. Each piece on the cabinet will vary in the amount of level and appearance in each effect creating a randomness of appearance. Techniques will be applied to doors and drawer fronts but will not be applied to the cabinet face frame and accessories. Some specialty accessories like Open Display Cabinets and Bookcases will receive these effects. Many small mouldings will not receive the Finish Techniques. The Finish Techniques will vary within individual doors; therefore, no two doors will be alike throughout the entire kitchen. These techniques are shown on page 34.

- **Medium Dents**

A physical technique of randomly striking the wood surface with a tool to create indentations that mimic the look of aged wood. Medium Dents are larger than Worm Holes and will collect a glaze in varying amounts when applied.

- **Carved Edges**

A technique where small areas of the wood surface are chiseled out on door edges and corners meaning to create a high level worn look.

- **Burnishing**

A technique where the profile edges have been darkened to create an antiqued effect.

- **Rub Through**

A sanding technique used to randomly expose an undercoat of natural wood tone on corners and edges.

- **Rasping**

A physical technique using a metal scrapper called a rasp which runs over the edges and raised details to mimic severe wear.

- **Small Dents**

A physical technique of randomly striking the wood surface with a tool to create indentations that mimic the look of aged wood. Small Dents are larger than Worm Holes and will collect a glaze in varying amounts when applied.

- **Dry Brushing**

A technique applying a very dark stain to highlight the distressing on the surface of the wood.

- **Worm Holes**

A physical technique of randomly placing small round holes that mimics the look of insect penetration which occurs naturally in trees and harvested wood. Worm Holes are smaller than Small Dents and will collect a glaze in varying amounts when applied.

The Beauty Of Door Materials

Wellborn Cabinet, Inc. offers a large range of beautiful cabinetry materials that includes Wood, Medium Density Fiberboard, Decorative Laminate Veneer and Metal. The unique beauty of natural hardwood, laminates and metal define and enhance the beauty of your cabinetry.

Wood



Cherry

Cherry is synonymous with luxurious cabinets. The rich red highlights give the wood a distinctive appearance. Cherry will occasionally have tiny pin knots, pitch pockets and very small, dark streaks of gum. These features have fascinated woodworkers for centuries.



Character Cherry

Character Cherry's unique characteristics are emphasized by randomly occurring various sized knots, pin knots, pitch pockets and small streaks of gum. Cluster knots and open knots could also be a feature. The amount of character will vary from each door making each kitchen unique.



Maple

Maple is widely used in the cabinetry industry. This wood species features a straight grain with several distinctive characteristics. These include unique figures such as bird's-eye, fiddle back, mineral streaks and curly grain patterns. Finely textured with a natural luster, this creamy-white to light reddish-brown wood is often used for cabinets and floors.



Character Maple

Character Maple's unique characteristics are brought out by randomly occurring, variously sized knots, pin holes, worm holes and tracks, gum and bark pockets, sugar tracks, heartwood and mineral streaks. Cluster knots and open knots could also be a feature. The amount of character marks will vary from each piece of wood making each kitchen unique.



Oak

Authentic American red Oaks are open-pored and have grain patterns. Wellborn's manufacturing technology presents Oak with straighter grains than most cabinet lines, and our process minimizes the wide grains and reduces the widths of cathedrals in Oak.



Hickory

Hickory has distinctive contrasting colors from light to dark and strong grain characteristics. The texture of Hickory is open grained. Hickories by nature are heavy, hard, strong and stiff -producing durable cabinetry. Hickory is for homeowners desiring dramatic wood characteristics.

Laminate



Laminate

Laminate is a decorative panel with resin-saturated printed paper thermally fused to a particleboard or MDF core. The thermally fused melamine process bonds the paper and board using heat and pressure. The paper gives the appearance of wood grain or painted finishes.

Medium Density Fiberboard



MDF

Using high pressure and temperatures, MDF is formed by combining wood fibers with a wax resin binder to form panels. It is made of wood veneer. It is much more dense than normal particle board. This is a durable and tough wood product, commonly used in the construction industry.

Decorative Laminate Veneers

Decorative Laminate Veneers have an MDF particle core and are composed of the different laminates and melamines listed below, creating a strong material.



Matte Laminate

Matte Laminate melamines have a super-matte finish with a silky smooth touch.



High Gloss Laminate

High Gloss laminates are created by laminating decorative paper to a MDF core then applying a high gloss finish to the outer panel and a matte finish to the inside panel.



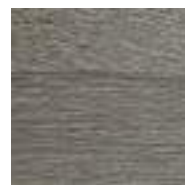
High Gloss Acrylic Laminate

High Gloss Acrylic laminates are pressed onto a high quality super-refined engineered MDF core with PUR glue. The high gloss acrylic has a mirror-like reflective surface.



Embossed Melamine

Embossed Melamine is a Thermally Fused Laminated or High Pressure Laminated surface with dual-sided textured grain. Embossed Melamine is a high-impact surface.



Heavy Textured Melamine

Heavy Textured Melamine is a deeply embossed thermo-structured surface that showcases a wood's natural ridges, which are accentuated by deep furrows that add texture to the laminated surface.

Metal



Aluminum

Aluminum is characteristically lightweight and has high reflectivity, enhancing the illumination in your home.

Special Effects

Character Cherry

Character Maple

Character features include knots that may be located in the center panel of the door and drawer panels. Open knots located in the center panel of the door and drawer panels are acceptable, though they must be structurally sound. Sound or closed knots are acceptable up to 2½" in diameter. Knots with visible openings entirely through the wood must not exceed ½". Cluster knots could also be a feature. Some knot locations may affect hardware placement.

Other parts of the cabinet like door stiles, rails and mouldings will not include knots, but may show other natural features. However, it will be uncommon to find all markings on any single piece. Door parts are chosen at random with the appearance of each individual door varying widely. Cabinet face frames, end panels, and open cabinets (such as bookcases and other components) will not include knots; however they may appear with grain characteristics of Character and/or clear Cherry and Maple.



Character Cherry has randomly occurring, variously sized knots, worm holes and tracks, gum pockets and streaks, mineral stains and streaks, burls, blemishes, sapwood and non-structural splits. Character Cherry wood color can range from pink to dark brown with a flowing grain pattern and open and closed knots. Cluster knots could also be a feature.



Character Maple characteristics are brought out by randomly occurring, variously sized knots, pin holes, worm holes and tracks, gum and bark pockets, sugar tracks, heartwood and mineral streaks. Character Maple will include wood color differences caused by variations found in minerals in the soil.



Dark Finishes on Character

- Dark stains and paints will hide the majority of character features. Large open knots and some splits, if present, may still be partially visible.
- Character features are more noticeable on Natural or lighter toned finishes.

Ticking



- Glaze Technique will hang up in all open grain areas in wood, especially Oak

Glazing on Bead Board



- Glazing on Bead Board will result in darker color in grooves

Special Effects

Stained Finishes

- Detailed hand sanded door and end grains
- Authentic solid wood from America
- Oven-cured baked-on top coat



Stained Finishes with Glaze Technique

- Glazed Finish applied to entire door, then hand-wiped to create inconsistent hang-up in corners and recessed areas
- Glaze hang-up from light to dark tones
- Glaze creates a one of a kind look on each door
- Oven-cured baked-on finish and top coat



Painted Finishes

- Several coats of pigmented paint applied for maximum coverage
- Joint lines common on painted finishes
- Some wood grain may show through the paint
- Oven-cured baked-on top coat
- The wood grain characteristics, including patterns and textures, will be visible when Character Maple is painted



Painted Finishes with Glaze Technique

- Several coats of pigmented paint applied for maximum coverage
- Glazed Finish applied to entire door, then hand-wiped to create inconsistent hang-up in corners and recessed areas
- Glaze hang-up from light to dark tones
- Glaze creates a one of a kind look on each door
- Joint lines common on painted finishes
- Some wood grain may show through the paint
- Oven-cured baked-on top coat
- The wood grain characteristics, including patterns and textures, will be visible when Character Maple is painted



Select Wood Door Overlay Styling



Arlington Arch S
Cherry Blush Charcoal
SDF Standard
CHY/MPL/OAK



Arlington Square S
Maple Glacier Java
SDF Standard
CHY/MPL/OAK



Bedford Arch
Hickory Natural
SDF Standard
CHY/MPL/OAK/HKY



Bedford Arch
Cherry Natural
CDF Option
CHY/MPL/OAK/HKY

Drawer Front Options
SDF Slab Drawer Front
CDF Classic Drawer Front
HGDF Horizontal Grain Drawer Front

Door Material Options
CHY Cherry
MPL Maple
OAK Oak
HKY Hickory

S Only available in Select Series



Bedford Square
Oak Natural
SDF Standard
CHY/MPL/OAK/HKY



Bedford Square
Oak Glacier Java
CDF Option
CHY/MPL/OAK/HKY



Concord S
Maple Natural
SDF Option
MPL



Concord S
Maple Nutmeg Java
CDF Standard
MPL



Franklin S
Oak Light Java
SDF Standard
MPL/OAK



Harmony S
Maple Crème Mocha
SDF Option
CHY/MPL



Harmony S
Maple Dove Java
CDF Standard
CHY/MPL



Harvest Arch S
Maple Sable Charcoal
SDF Standard
CHY/MPL/OAK



Harvest Square S
Cherry Saffron
SDF Standard
CHY/MPL/OAK



Millbrook Arch
Oak Light
SDF Standard
CHY/MPL/OAK

Select Wood Door Overlay Styling



Millbrook Arch
Cherry Caramel
CDF Option
CHY/MPL/OAK



Millbrook Square
Oak Light
SDF Standard
CHY/MPL/OAK



Millbrook Square
Cherry Saffron
CDF Option
CHY/MPL/OAK



Prairie
Maple Sandstone
SDF Standard
CHY/MPL/OAK/HKY



Prairie
Cherry Sienna Charcoal
CDF Option
CHY/MPL/OAK/HKY



Urban
Cherry Natural
SDF Standard
CHY/MPL/OAK



Urban S
Oak Drift
HGDF Option
CHY/MPL/OAK

Cherry Finishes

All Cherry door styles are available in color selections which present unique choices for you. This color palette is created with stained finishes, many of which can be enhanced with a glaze highlight.

* See Premier for Aspire wood door finish availability

Stains



Natural



Saffron



Light



Caramel



Dark



Sable



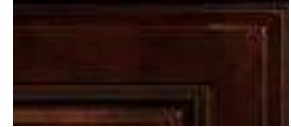
Drift



Sienna



Blush



Espresso



Shadow

Stains with Glazes



Natural Slate



Natural Java



Saffron Slate



Saffron Java



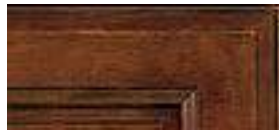
Nutmeg Java



Caramel Java



Cocoa Java



Sable Charcoal



Drift Slate



Sienna Charcoal



Blush Charcoal



Blush Java



Shadow Charcoal

Maple Finishes

All Maple door styles are available in color selections which present unique choices for you. This color palette is created with both stained and painted finishes, many of which can be enhanced with a glaze highlight.

Stains



Natural



Light



Medium



Caramel



Sable



Spiceberry



Drift



Sienna



Blush



Espresso



Coffee



Shadow

Stains with Glazes



Natural Slate



Honey Java



Light Java



Nutmeg Java



Caramel Java



Sable Charcoal



Drift Slate



Sienna Charcoal



Blush Charcoal



Blush Java



Shadow Charcoal

Paints



Bright White



Glacier



Divinity



Crème



Sandstone



Pebble



Gray Mist



Dove



Willow



Onyx

Paints with Glazes



Bright White Java



Glacier Java



Divinity Java



Crème Mocha



Sandstone Slate



Pebble Java



Gray Mist Granite



Gray Mist Java



Dove Slate



Dove Java



Willow Slate

Oak Finishes

Wellborn's color palette of stains and paints transform the beautiful grains of Oak. This color palette is created with both stained and painted finishes, many of which can be enhanced with a glaze highlight.

Stains



Natural



Light



Medium



Caramel



Dark



Sable



Spiceberry



Drift



Sienna



Blush



Espresso



Coffee



Shadow

Stains with Glazes



Natural Slate



Honey Java



Light Java



Nutmeg Java



Caramel Java



Sable Charcoal



Drift Slate



Sienna Charcoal



Blush Charcoal



Blush Java



Shadow Charcoal

Paints



Bright White



Glacier



Divinity



Crème



Sandstone



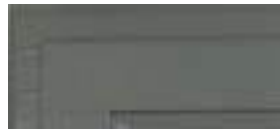
Pebble



Gray Mist



Dove



Willow



Onyx

Paints with Glazes



Bright White Java



Glacier Java



Divinity Java



Crème Mocha



Sandstone Slate



Pebble Java



Gray Mist Granite



Gray Mist Java



Dove Slate



Dove Java



Willow Slate

Hickory Finishes

Wellborn offers a color palette of stains and painted finishes in Hickory that complements many design styles. Many of the stains and painted finishes can be enhanced with a glaze highlight.

Stains



Natural



Light



Medium



Caramel



Dark



Sable



Spiceberry



Drift



Sienna



Blush



Espresso



Coffee



Shadow

Stains with Glazes



Natural Slate



Honey Java



Light Java



Nutmeg Java



Caramel Java



Sable Charcoal



Drift Slate



Sienna Charcoal



Blush Charcoal



Blush Java



Shadow Charcoal

Medium Density Fiberboard (MDF) Door Styling



Alto
Divinity
SDF Standard
MDF



Belmont
Crème
SDF Option
MDF



Belmont
Dove Java
CDF Standard
MDF



Bishop
Willow
SDF Standard
MDF



Bishop
Pebble
CDF Option
MDF



Camden Arch
Glacier
SDF Standard
MDF



Camden Arch
Sandstone
CDF Option
MDF



Camden Square
Glacier Java
SDF Standard
MDF



Camden Square
Dove Slate
CDF Option
MDF



Hancock
Willow
SDF Standard
MDF



Hancock
Dove
CDF Option
MDF



Hartford
Pebble Java
SDF Option
MDF



Hartford
Glacier
CDF Standard
MDF



Trestle
Sandstone
SDF Standard
MDF



Trestle
Divinity Java
CDF Option
MDF

Drawer Front Options

SDF Slab Drawer Front
CDF Classic Drawer Front

MDF Finishes

Paints



Bright White



Glacier



Divinity



Crème



Sandstone



Pebble



Gray Mist



Dove



Willow



Onyx

Paints with Glazes



Bright White Java



Glacier Java



Divinity Java



Crème Mocha



Sandstone Slate



Pebble Java



Gray Mist Granite



Gray Mist Java



Dove Slate



Dove Java



Willow Slate

Laminate Door Styling



Loft S
Natural Maple
SDF Standard
LAM



Manchester S
Sienna Maple
SDF Standard
LAM

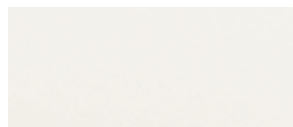
Drawer Front Options

SDF Slab Drawer Front

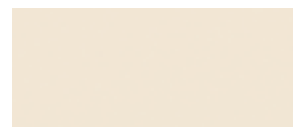
S Only available in Select Series

Laminate Colors

Laminate offers a variety of choices for designing sleek, contemporary styles. Laminates are available only in the Select Series. *Not available on Loft Laminate door style.



White*



Linen*



Natural Maple



Sienna Maple



Spiceberry Maple

Regal Door Collection

Our Regal Door Collection includes both Heavy Textured and Embossed Melamine Colors.

* Not Available in Morristown



Arcadia
Husk Alder Vertical
SDF Standard
Embossed Melamine



Bel-Air
Cinder Alder Horizontal
SDF Standard
Embossed Melamine



Morristown
Platinum Alder
SDF Standard
Embossed Melamine



Morristown
Putty Oak
CDF Option
Heavy Textured Melamine

Drawer Front Options

SDF Slab Drawer Front
CDF Classic Drawer Front

Heavy Textured Melamine Colors



Snow Oak Horizontal



Snow Oak Vertical



Cotton Pine Horizontal



Cotton Pine Vertical



Barnwood Oak Horizontal



Barnwood Oak Vertical



Zinc Oak Horizontal



Zinc Oak Vertical



Putty Oak Horizontal



Putty Oak Vertical



Smoke Oak Horizontal



Smoke Oak Vertical



Bark Maple Horizontal



Bark Maple Vertical



Caviar Oak Horizontal



Caviar Oak Vertical

Embossed Melamine Colors



Tusk Alder Horizontal



Tusk Alder Vertical



Biscotti Cherry Horizontal



Biscotti Cherry Vertical



Platinum Alder Horizontal



Platinum Alder Vertical



Husk Alder Horizontal



Husk Alder Vertical



Cinder Alder Horizontal



Cinder Alder Vertical



Terra Oak Horizontal



Terra Oak Vertical



Sorrel Alder Horizontal



Sorrel Alder Vertical



Smokey Walnut Horizontal



Smokey Walnut Vertical



Chicory Alder* Horizontal



Chicory Alder* Vertical

Brilliant Door Collection

Our Designer Laminate Colors include both Solid and Specialty Colors.



† Door style will be Midtown



Midtown
Dusk Vertical
SDF Standard
Designer Laminate



Soho
Olivá Horizontal
SDF Standard
Designer Laminate

Drawer Front Options
SDF Slab Drawer Front

Edge Banding

Standard



Matching Edge

Options



Aluminum Finish Edge

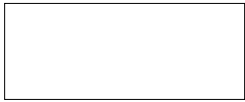


Accent Edge

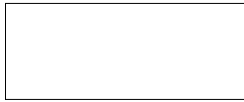
◆ Available on these colors

Designer Laminate Colors

Solid Colors



Matte Super White † Acrylic



High Gloss Super White †◆ Acrylic



High Gloss Moonlight †◆ Acrylic



Matte Stone † Acrylic



High Gloss Cinder † Acrylic



Matte Ebony † Acrylic



High Gloss Ebony †◆ Acrylic



High Gloss Poppy Red † Acrylic

Specialty Colors



High Gloss Gold † Acrylic



High Gloss Stardust †◆ Acrylic



Bronzed Leather †◆ High Gloss Melamine



Olivá Horizontal High Gloss Melamine



Olivá Vertical High Gloss Melamine



Dusk Horizontal ◆ High Gloss Melamine



Dusk Vertical ◆ High Gloss Melamine



Sepia Horizontal High Gloss Melamine



Sepia Vertical High Gloss Melamine

Metal Door Collection



Aurora



Fresno



Lynton



Marsala



Naples



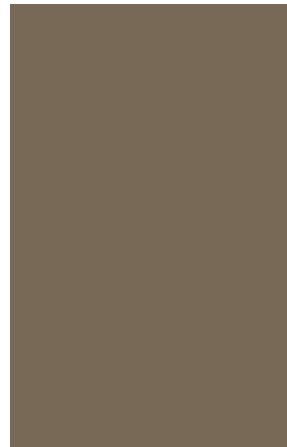
Riviera



Serenity



Sterling



Vista

Profile Finishes

Anodized Aluminium



Natural Aluminium



Brushed Stainless



Specialty Anodized



Brushed Black



Chrome



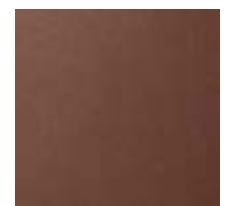
Onyx



Arctic Silver



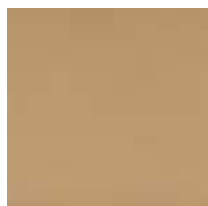
Copper



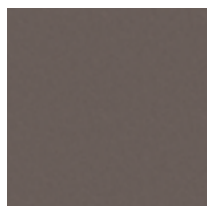
Luxe Bronze



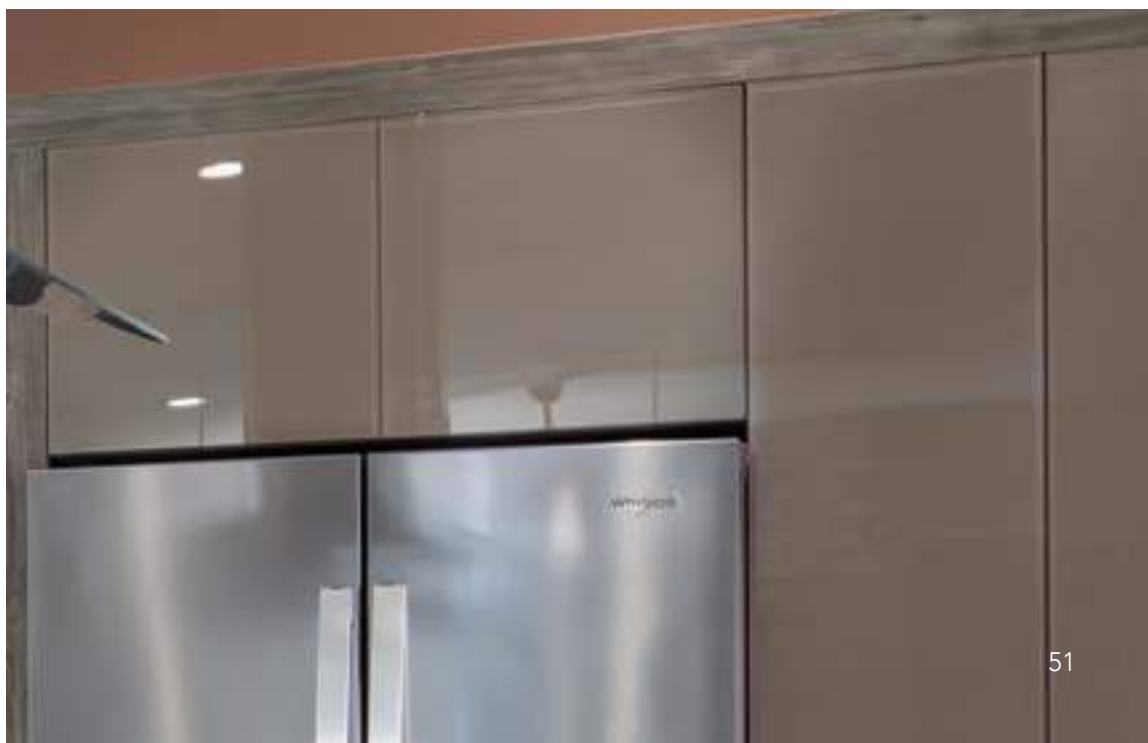
Modern Brass



Gold



Graphite



STANDARD Furniture Board Drawer



$\frac{3}{4}$ " Wood grain/white laminated furniture board drawer with epoxy coated, self-closing, side-mount drawer slides

OPTIONS Plywood Drawer



$\frac{5}{8}$ " Plywood dovetail drawer box in natural finish with laminated plywood drawer bottom and undermount soft close drawer slides. Dovetail joints are unfinished.

SOLID WOOD DRAWER with Full Extension Drawer Slides



$\frac{5}{8}$ " Solid hardwood drawer box in natural finish with classic dovetail construction and undermount full extension soft close drawer slides

ALL PLYWOOD CONSTRUCTION OPTION (APC) Plywood Drawer



$\frac{5}{8}$ " Plywood dovetail drawer box in natural finish with laminated plywood drawer bottom and undermount full access soft close drawer slides. Dovetail joints are unfinished.

SELECT SERIES

$\frac{11}{16}$ " x $3\frac{1}{2}$ " Wood grain laminated fiberboard hanging rails. $\frac{1}{2}$ " x 3" I-beam furniture board support dadoed into front, back and side

WellShield® wood grain laminate interior.** $\frac{3}{4}$ " Wood grain laminated furniture board adjustable shelves with edge banding; dual locking WellLock Shelf Clips®

$\frac{1}{8}$ " Wood grain printed MDF back

$\frac{1}{2}$ " Wood grain laminated furniture board top and bottom

The Select Series has a machine sanded finish process and does not include the detailed sanding technique featured in the Wellborn Collection; therefore, we do not recommend designs combining the series.



$\frac{1}{2}$ " Complementary wood grain laminated furniture board end panels finished on top and bottom edges.*
Option: $\frac{1}{2}$ " Thick plywood ends with unfinished exterior

$\frac{3}{4}$ " x $1\frac{3}{4}$ " Kiln-dried solid wood face frames, mortised and tenoned, glued and stapled

$\frac{3}{4}$ " Wood grain laminated furniture board drawer sides, tenoned to accept $\frac{1}{2}$ " sub-front and back, $\frac{1}{8}$ " wood grain printed hardboard drawer bottoms, $\frac{3}{4}$ " solid wood drawer front*, epoxy coated self-closing side mount drawer slides
Option: $\frac{5}{8}$ " Plywood drawer upgrade with dovetail construction and full access soft close undermount drawer slides
Option: $\frac{5}{8}$ " Solid wood drawer upgrade with dovetail construction and full extension drawer slides with soft close action

Doors have WellLine® 6-way adjustable concealed hinges Option: WellLine® 6-way adjustable concealed smooth close hinge

$4\frac{1}{2}$ " H x $3\frac{3}{8}$ " D Toe kick cut-out, $\frac{1}{2}$ " unfinished furniture board toe kick extends to cabinet floor for captive construction

SELECT ALL PLYWOOD CONSTRUCTION (APC)

All Plywood Construction

$\frac{3}{4}$ " x $3\frac{1}{2}$ " Wood grain laminated solid hardwood or plywood hanging rails. $\frac{1}{2}$ " x 3" I-beam plywood support dadoed into front, back and side

WellShield® interior is Natural Maple wood grain laminate.** $\frac{3}{4}$ " Laminated plywood adjustable shelves with edge banding; dual locking WellLock Shelf Clips®

$\frac{3}{16}$ " Wood grain laminated plywood back

$\frac{1}{2}$ " Wood grain laminated plywood top and bottom

* For end panels options, see your Wellborn dealer.

** For Laminate door styles, Paints and Paints with Glazes, the interior will be Natural Maple wood grain laminate.

*** Refer to door style construction for specific door styles.



$\frac{1}{2}$ " Unfinished plywood end panels with laminated interior* (Flush Cabinet End and Matching Finished End options available)

$\frac{3}{4}$ " x $1\frac{3}{4}$ " Kiln-dried solid wood face frames, mortised and tenoned, glued and stapled

Solid wood drawer fronts.*** $\frac{5}{8}$ " Plywood dovetail drawer in a natural finish with laminated plywood drawer bottom and undermount full access soft close drawer slides

Doors have WellLine® 6-way adjustable concealed hinges Option: WellLine® 6-way adjustable concealed smooth close hinge

$4\frac{1}{2}$ " H x $3\frac{3}{8}$ " D Toe kick cut-out, $\frac{1}{2}$ " unfinished plywood toe kick extends to cabinet floor for captive construction

Overlay and Inset Cabinet Construction

STANDARD DRAWER

Solid Wood Drawer Full Extension Drawer Slides



5/8" Solid hardwood drawer box in natural finish with classic dovetail construction and undermount full extension soft close drawer slides

ALL PLYWOOD CONSTRUCTION OPTION (APC)

Solid Wood Drawer Full Extension Drawer Slides



5/8" Solid hardwood drawer box in natural finish with classic dovetail construction and undermount full extension soft close drawer slides

PREMIER SERIES

11/16" x 3 1/2" Wood grain laminated fiberboard hanging rails. 1/2" x 3" I-beam furniture board support dadoed into front, back and side

WellShield® interior is Natural Maple wood grain laminate*. 3/4" Wood grain laminated furniture board adjustable shelves with edge banding; dual locking WellLock Shelf Clips®

1/8" Wood grain printed MDF back

1/2" Wood grain laminated furniture board top and bottom



1/2" Natural Maple wood grain laminated furniture board end panels (Flush Cabinet End and Matching Finished End options available)

3/4" x 1 3/4" Kiln-dried solid wood face frames; mortised and tenoned, glued and stapled

Solid wood drawer fronts.*** 5/8" Solid hardwood drawer in a natural finish with laminated plywood bottom, dovetail construction and full extension drawer slides featuring soft close****

Solid wood raised panel doors of Cherry, Character Cherry, Maple, Character Maple, Oak or Hickory.*** Doors have WellLine® 6-way adjustable concealed smooth close hinges****

24-step WellGuard Finishing System® for a furniture like luster and years of beauty

4 1/2"H x 3 3/8"D Toe kick cut-out, 1/2" unfinished furniture board toe kick extends to cabinet floor for captive construction

PREMIER ALL PLYWOOD CONSTRUCTION (APC)

All Plywood Construction

3/4" x 3 1/2" Wood grain laminated solid wood or plywood hanging rails. 1/2" x 3" I-beam plywood support dadoed into front, back and side

WellShield® interior is Natural Maple wood grain laminate. 3/4" Laminated plywood adjustable shelves with edge banding; dual locking WellLock Shelf Clips®

3/16" Wood grain laminated plywood back

1/2" Wood grain laminated plywood top and bottom



1/2" Unfinished plywood end panels with laminated interior (Flush Cabinet End and Matching Finished End options available)

3/4" x 1 3/4" Kiln-dried solid wood face frames; mortised and tenoned, glued and stapled

Solid wood drawer fronts.*** 5/8" Solid hardwood drawer in a natural finish with laminated plywood bottom, dovetail construction and full extension drawer slides featuring soft close****

Solid wood raised panel doors of Cherry, Character Cherry, Maple, Character Maple, Oak or Hickory.*** Doors have WellLine® 6-way adjustable concealed smooth close hinges****

24-step WellGuard Finishing System® for a furniture like luster and years of beauty

4 1/2"H x 3 3/8"D Toe kick cut out, 1/2" unfinished plywood toe kick extends to cabinet floor for captive construction

* For Paints and Paints with Glazes, the interior and exterior will be Natural Maple wood grain laminate.
 *** Refer to door style construction for specific door styles.
 **** Tolerance for doors and drawers will vary on Inset door styles. For non-beaded frame and concealed hinge details, see pg. 54.

Elegant Bath construction for most suites starts at Premier All Plywood Construction and has the option to upgrade to the Estate Series construction. Contact your dealer for details.

STANDARD DRAWER

Solid Wood Drawer Full Extension Drawer Slides



The cabinet drawer features $\frac{5}{8}$ " solid hardwood with quality dovetail joints for durability and strength. The soft close drawer slide presents a full extension feature that also closes tight to the face frame.

ESTATE SERIES

All Plywood Construction



$\frac{1}{2}$ " I-Beam plywood support dadoed into front, back and side.

Interior is natural finished plywood veneer. $\frac{3}{4}$ " Natural finished plywood adjustable, full depth shelves with edge banding; decorative chrome shelf supports

$\frac{1}{2}$ " Natural finished plywood veneer back

$\frac{1}{2}$ " Natural finished plywood veneer tops and bottoms

$\frac{1}{2}$ " Plywood end panels with unfinished exterior and natural finished interior

$\frac{3}{4}$ " x $1\frac{3}{4}$ " Kiln-dried solid wood face frames; mortised and tenoned, glued and stapled

Solid wood drawer fronts.*** $\frac{5}{8}$ " Solid hardwood drawer in a natural finish with natural finished veneer bottom, dovetail construction and full extension drawer slides featuring soft close****

Solid wood raised panel doors of Cherry, Character Cherry, Maple, Character Maple, Oak or Hickory. *** Doors have WellLine® 6-way adjustable concealed smooth close hinges****

24-step WellGuard Finishing System® for a furniture like luster and years of beauty

$4\frac{1}{2}$ "H x $3\frac{3}{8}$ "D Toe kick cut out, $\frac{1}{2}$ " unfinished plywood toe kick extends to cabinet floor for captive construction

*** Refer to door style construction for specific door styles.
**** For inset frame and hinge details, see below.

Elegant Bath construction for most suites starts at Premier All Plywood Construction and has the option to upgrade to the Estate Series construction. Contact your dealer for details.

INSET OPTIONS

FRAME OPTIONS

Non-Beaded Frame



A plain, non-beaded inset reflects authentic Shaker styling.

Beaded Frame



A beaded inset frame defines detail to its truest. The bead surrounds the door enhancing its style.

HINGE OPTIONS

Burnished Brass



Satin Nickel



Oil Rubbed Bronze



Concealed Hinge



Two styles of door hinging: A concealed hinge that is hidden behind the door for a more simple design or a barrel hinge that reflects old world craftsmanship.

Door Options

Traditional Overlay



- Traditional overlay doors reveal some of the frame for a very classic design.

Full Overlay



- Full overlay doors span over the face frame and have a concealed hinge for a clean look. Full overlay hinges have standard soft close feature in the Premier Series, Estate Series and Elegant Bath.

Inset



- Inset elegantly sets a cabinet door inside its frame. The Premier Series offers inset in a non-beaded face frame. The Estate Series and Elegant Bath offer inset in beaded and non-beaded face frames. These options are shown on page 54.

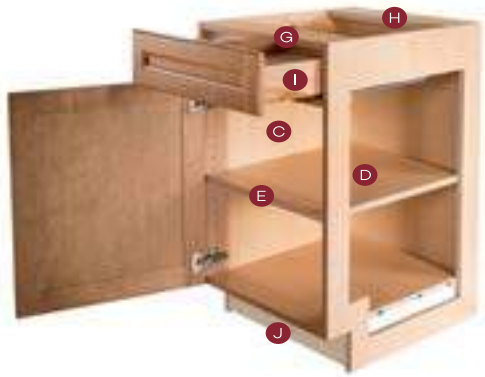
Full Access Frameless



- Doors and drawer fronts are sized to provide narrow reveals between each cabinet yielding a consistent, sleek, clean, minimalistic appearance. Clean lines and crisp edges are what define the Full Access Frameless.

WOOD DOOR COLLECTION STANDARD CABINET CONSTRUCTION

- A** 3/4" top panel is natural maple laminated furniture board. Front edge has coordinated edge banding to reflect exterior front finish
- B** 3/4" bottom panel is natural maple laminated furniture board. Front edge has coordinated edge banding to reflect exterior front finish
- C** Natural maple laminated cabinet interior (interior color options are available)
- D** 3/4" end panel is natural maple laminated furniture board. Front edge has coordinated edge banding to reflect exterior front finish (panel options are available)



- E** 3/4" full depth adjustable shelves are natural maple laminated furniture board (interior color options are available)
- F** 6-way adjustable concealed soft close hinges
- G** 3/4" x 4" front rail composed of laminated furniture board. Front edge has coordinated edge banding to reflect exterior front finish
- H** 3/4" x 4" stretcher rail composed of laminated furniture board
- I** 5/8" solid hardwood drawer sides (drawer options are available). Full extension undermount drawer slides featuring Soft Close
- J** 3/4" x 4" unfinished furniture board toe kick (matching base toe space cover available)



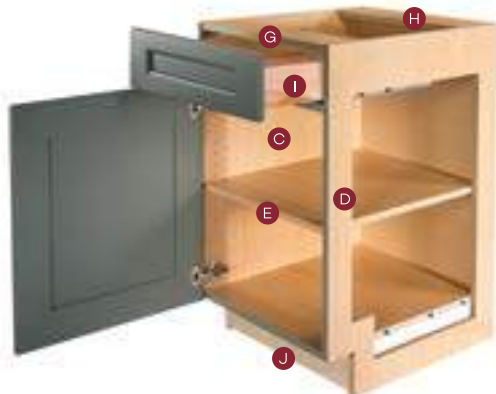
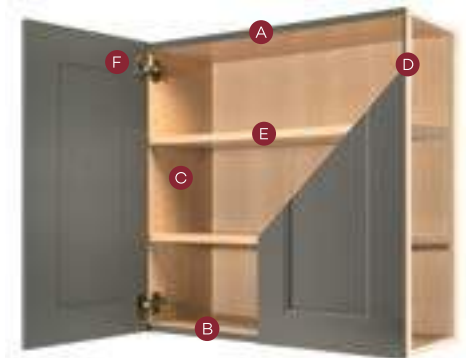
APC – ALL PLYWOOD CONSTRUCTION

Plywood is 3/4" thick.

- Cabinet interior and exterior is natural maple standard
 - Specify finished ends for all exposed ends
 - All end panels will be vertical grain
- Cabinet will have coordinated front edge banded to reflect exterior (front) finish

MEDIUM DENSITY FIBERBOARD (MDF) DOOR COLLECTION STANDARD CABINET CONSTRUCTION

- A** 3/4" top panel is natural maple laminated furniture board. Front edge has coordinated edge banding to reflect exterior front finish
- B** 3/4" bottom panel is natural maple laminated furniture board. Front edge has coordinated edge banding to reflect exterior front finish
- C** Natural maple laminated cabinet interior (interior color options are available)
- D** 3/4" end panel in natural maple laminated furniture board. Front edge has coordinated edge banding to reflect exterior front finish (panel options are available)



- E** 3/4" full depth adjustable shelves are natural maple laminated furniture board (interior color options are available)
- F** 6-way adjustable concealed soft close hinges
- G** 3/4" x 4" front rail composed of laminated furniture board. Front edge has coordinated edge banding to reflect exterior front finish
- H** 3/4" x 4" stretcher rail composed of laminated furniture board
- I** 5/8" solid hardwood drawer sides (drawer options are available). Full extension undermount drawer slides featuring Soft Close
- J** 3/4" x 4" unfinished furniture board toe kick (matching base toe space cover available)



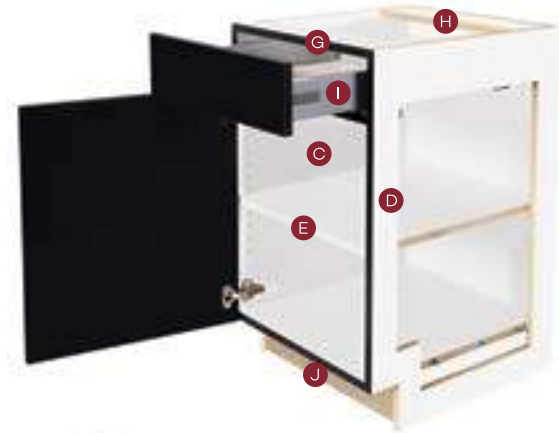
APC – ALL PLYWOOD CONSTRUCTION

Plywood is 3/4" thick.

- Cabinet interior and exterior is natural maple standard
 - Specify finished ends for all exposed ends
 - All end panels will be vertical grain
- Cabinet will have coordinated front edge banded to reflect exterior (front) finish

BRILLIANT DOOR COLLECTION STANDARD CABINET CONSTRUCTION

- A** 3/4" top panel is white laminated furniture board. Front edge has coordinated edge banding to reflect exterior front finish
- B** 3/4" bottom panel is white laminated furniture board. Front edge has coordinated edge banding to reflect exterior front finish
- C** White laminated cabinet interior (interior options are available)
- D** 3/4" end panel is white laminated furniture board. Front edge has coordinated edge banding to reflect exterior front finish (panel options are available)



- E** 3/4" full depth adjustable shelves are white laminated furniture board (interior color options are available)
- F** 6-way adjustable concealed soft close hinges
- G** 3/4" x 4" front rail composed of laminated furniture board. Front edge has coordinated edge banding to reflect exterior front finish
- H** 3/4" x 4" stretcher rail composed of laminated furniture board
- I** Deluxe Metal Drawer (drawer options are available). Full extension undermount drawer slides featuring Soft Close
- J** 3/4" x 4" unfinished furniture board toe kick (matching base toe space cover available)



APC – ALL PLYWOOD CONSTRUCTION

Plywood is 3/4" thick.

- Cabinet interior and exterior is white standard
 - Specify finished ends for all exposed ends
 - All end panels will be vertical grain
- Cabinet will have coordinated front edge banded to reflect exterior (front) finish

REGAL DOOR COLLECTION STANDARD CABINET CONSTRUCTION

- A** 3/4" top panel is natural maple laminated furniture board. Front edge has coordinated edge banding to reflect exterior front finish
- B** 3/4" bottom panel is natural maple laminated furniture board. Front edge has coordinated edge banding to reflect exterior front finish
- C** Natural maple laminated cabinet interior (interior options are available)
- D** 3/4" end panel is natural maple laminated furniture board. Front edge has coordinated edge banding to reflect exterior front finish (panel options are available)



- E** 3/4" full depth adjustable shelves are natural maple laminated furniture board (interior color options are available)
- F** 6-way adjustable concealed soft close hinges
- G** 3/4" x 4" front rail composed of laminated furniture board. Front edge has coordinated edge banding to reflect exterior front finish
- H** 3/4" x 4" stretcher rail composed of laminated furniture board
- I** 5/8" solid hardwood drawer sides (drawer options are available). Full extension undermount drawer slides featuring Soft Close
- J** 3/4" x 4" unfinished furniture board toe kick (matching base toe space cover available)



APC – ALL PLYWOOD CONSTRUCTION

Plywood is 3/4" thick.

- Cabinet interior and exterior is natural maple standard
 - Specify finished ends for all exposed ends
 - All end panels will be vertical grain
- Cabinet will have coordinated front edge banded to reflect exterior (front) finish

EVERY ROOM. EVERY HOME.



Bath



Pantry



Entertainment



Mudroom

EVERY BUDGET. EVERY IMAGINATION.

Wellborn Cabinet, Inc. proudly offers cabinetry for every room of the home... your Whole Home Solution. We have created solutions that are both stylish and functional and can be incorporated into any budget in any home. Through our numerous door style designs, finish colors, finish techniques and our ColorInspire Program, the possibilities are only limited by your imagination.

We invite you to visit your local dealer or go to our website at www.wellborn.com to discover all of the ways that Wellborn Cabinet, Inc. can help you design cabinetry for everyday living in every room of your home.



Living Room



Bath



Laundry Room



Office

Illuminate
Your Life



Touch to Lift, Touch to Light, Touch to Open, Touch to Close



Decorative Doors, Glass, Metal & Wood



Mouldings, Wainscot, Islands & Hoods



Details Add Function





OUR COMMITMENT TO THE ENVIRONMENT



Wellborn's Environmental Belief Statement

It is Wellborn Cabinet, Inc.'s corporate-wide goal to fully incorporate leading environmental practices, policies, and standards throughout our enterprise — from our suppliers through final delivery to our customers. Our environmental responsibility extends to selecting, educating, and embracing suppliers based on their commitment to similar environmental practices, including the use of sustainable or recycled raw materials as well as low emission products.

Green Choice is About Taking Action

Environmental stewardship has been part of Wellborn's culture since its beginning. This has been proven through decades of actions, investments, and practices. The Green Choice program ensures that you are purchasing a brand of cabinets from a company that takes conscious steps to protect and minimize the overall impact on our environment. At Wellborn, we have recycling programs that utilize wood waste to generate power and steam and continue to lower VOC emissions through technology. We partner with our suppliers to improve their environmental programs. You will find the KCMA environmental stewardship program seal proudly displayed on our cabinetry. We also partake in certification programs, which guarantees that our manufacturing process reduces the effects on the environment.

Wellborn continuously searches for new technologies and processes to improve our sustainability practices. We will continue to partner with our suppliers and industry associations in a joint effort to embrace the changes necessary and ensure that we all have a healthier environment. Wellborn's demonstrated commitment to environmental stewardship offers you the assurance that the cabinets you buy are the Green Choice for generations of family and the environment.

KCMA Environmental Stewardship Program Certification

Wellborn endorses the industry-wide efforts and commitment of the KCMA organization and its Environmental Stewardship Program (ESP). The ESP certification program establishes a standard, measurable benchmark for environmental performance. This certification validates our performance to adhere to high standards for air quality, product resource management, process resource management, environmental stewardship, and community relations. You will find the KCMA Environmental Stewardship Program seal proudly displayed on our cabinetry. The ESP program provides the only standards for manufacturers in the Kitchen & Bath cabinet industry that truly defines and measures the holistic environmental performance of a manufacturing enterprise — not just its finished cabinets.

The KCMA's Environmental Stewardship Program has been named as the benchmark for cabinets by the National Association of Home Builder's ANSI-approved Green Building Standard™.

Points toward ESP certification are awarded based on compliance in the following categories:

- | | |
|-----------------------------|---------------------------|
| Air Quality | Environmental Stewardship |
| Product Resource Management | Community Relations |
| Process Resource Management | |

Wellborn Cabinet, Inc. along with our affiliate operations, are fully certified under this program. In looking to the future, Wellborn Cabinet, Inc. has committed to recertify annually as the program adopts new industry standards and practice.

Eco-Certified Composite Sustainability Standard

With the Eco-Certified Composite (ECC) Sustainability Standard, you can be assured that Wellborn's composite wood panels are among the greenest products available for architectural, construction and consumer products.

The ECC certification delivers verifiable evidence of greenness, demonstrating compliance in three of five categories including carbon footprint, local and renewable resources, recycled/recovered content, sustainability, and wood sourcing through a recognized standard.



Our Warranty Program

Lifetime Limited Warranty

Wellborn Cabinet, Inc. provides a Lifetime Limited Warranty on the Select, Premier and Estate Series, Elegant Bath and Aspire Cabinetry to the original consumer purchaser for the lifetime of the product from the Wellborn Dealer's original date of purchase. The lifetime of cabinets is expected to be 10 years. Based on all other warranty terms and conditions being met, warranty claims will be prorated based on the expected lifetime of the product.

Exclusive Lifetime Limited Warranty Drawer Box, Door Hinge & Drawer Suspension System

Wellborn Cabinet, Inc. warrants our solid wood dovetailed drawer boxes to the original consumer purchaser for the lifetime of the product. Wellborn Cabinet, Inc. also offers an Exclusive Lifetime Limited Warranty to the original consumer purchaser on our Drawer Suspension Systems and Door Hinges. This warranty is expressed by the supplier. Replacement hinges and drawer slides are subject to availability from our supplier. If a claim is filed after a product becomes obsolete, the manufacturer will replace the discontinued product with a product that is closest to being equivalent to the original. Wellborn Cabinet offers Limited Warranties to the original consumer purchaser. Please see warranty sheet for complete details.



OUR FACILITY

Since 1961, the Wellborn family has owned and operated Wellborn Cabinet, Inc. located in the southern part of the Appalachian Mountains in Ashland, Alabama.

Featured photography used in this publication:

Cover Henlow Square Maple, Divinity Java and SW6424 Tansy Green

(Photo courtesy of Creative Cabinets & Design)

pg. 3 Winslow Maple, Willow

(Photo courtesy of Southern Living)

pgs. 4-5 Davenport Square Maple, Glacier and BM805 NY State of Mind

(Photo courtesy of Coastal Living)

pgs. 6-7 Winslow Maple Divinity and SW7521 Dormer Brown

(Photo courtesy of Southern Living)

Hanover Maple Inset, Shale

(Photo courtesy of Pankow Construction)

Hanover Maple, Bright White and Drift

(Photo courtesy of Mosaic Home Interiors)

pg. 13

Midtown, Matte Ebony

Bel-Air, Barnwood Oak

(Photo courtesy of Mosaic Home Interiors)

pg. 58

Henlow Square Maple Inset, SW7015 Repose Gray

Hanover Maple Inset, Bleu

(Photos courtesy of Southern Living)

Distributed by:

WELLBORN CABINET™

38669 Hwy. 77 | Ashland, Alabama 36251
(256) 354-7151 | Fax (256) 354-7022
wellborn.com



KITCHEN CABINET
MANUFACTURERS ASSOCIATION™



AIA
Continuing
Education
Provider



B8786PK10
Copyright 1997, Rev. February 2020

Due to the limitations of photography and the lithographic printing process, the door materials shown in this brochure may not accurately depict those offered by Wellborn Cabinet, Inc. See your local Wellborn Dealer for actual sample color selections. Decorative hardware shown is optional.

