



AT-HOME CABINET MEASURING GUIDE



Send any photos and drawings to:
info@mtnkitchens.com

Include some information on what you are looking to get done, anything special you'd like included in the design, and whether you're looking for a reface or full remodel.

The health and safety of our employees, customers and partners is our number one priority.

While under normal circumstances we would go to your home in person to measure your cabinetry and discuss the plan, we are going to do as much as we can remotely.

Use this guide to help you measure your existing cabinetry, and we will get you a quote!

If you need further help we would be happy to talk you through it over the phone or via a video call.

STEP 1: TAKE PHOTOS

Take photos from a few angles in the room, so that we can be sure to see everything unique about the space.

If there is anything you especially love or hate about what you currently have, be sure to photograph it and point it out to us!

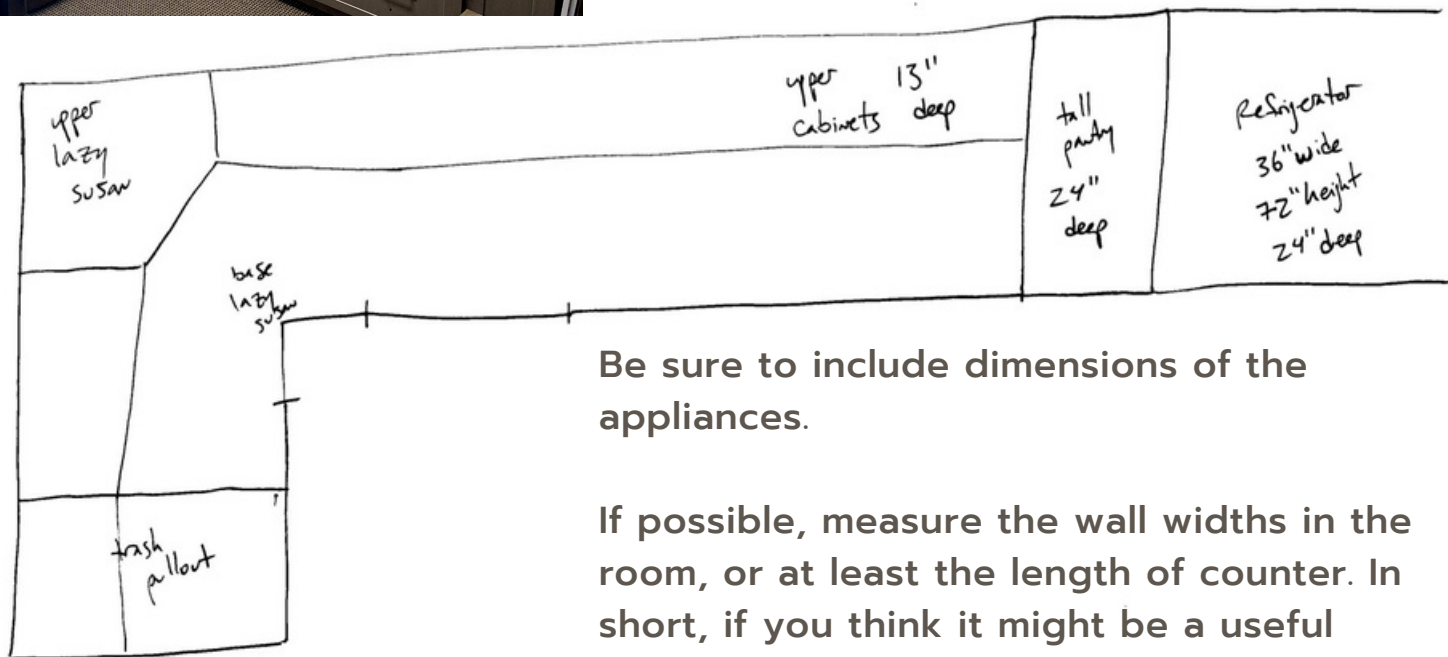
Include a photo of an open drawer from the top, and at least one cabinet with both doors open.





STEP 2: DRAW A FLOORPLAN

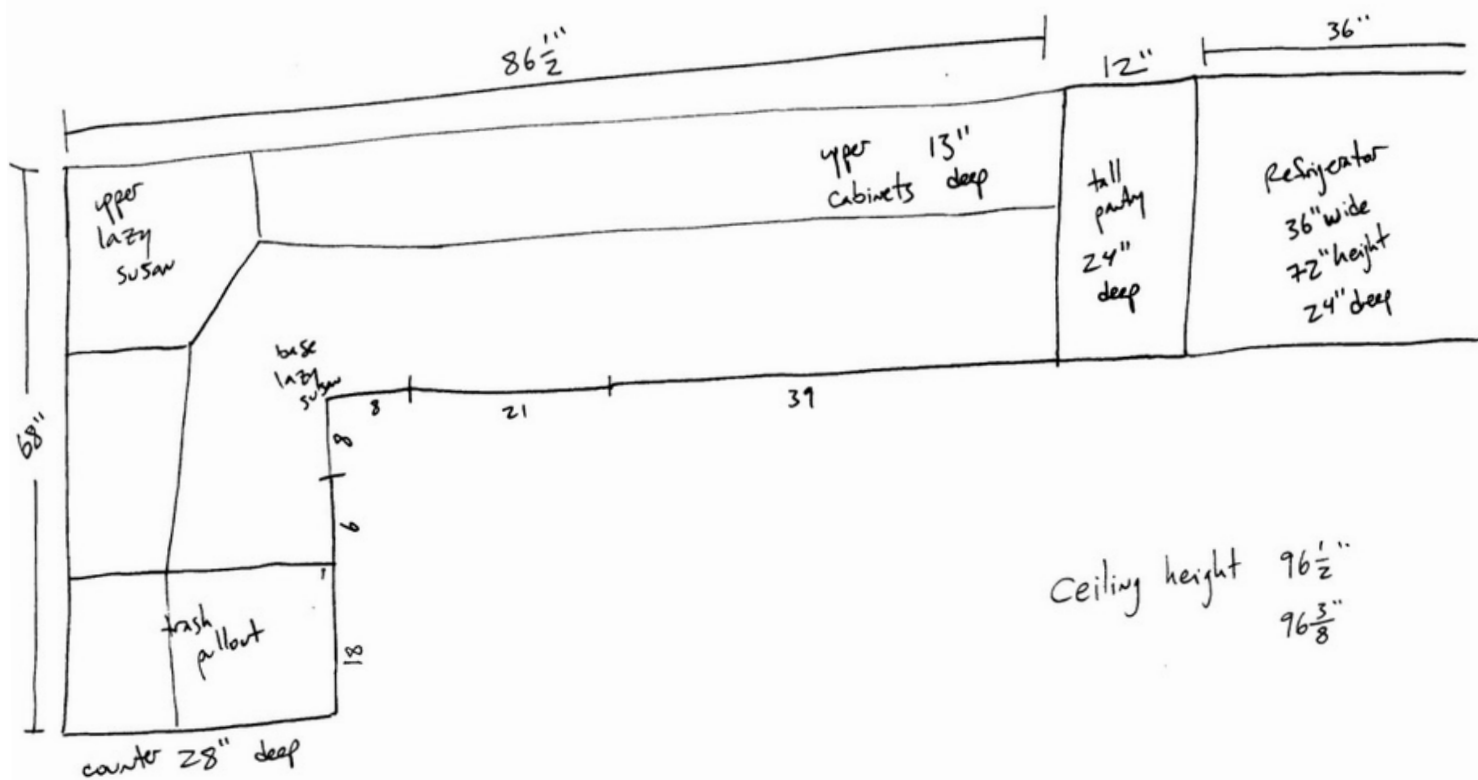
Draw a top view of your kitchen (or other space) making particular note of any appliances, windows, and doors.



Be sure to include dimensions of the appliances.

If possible, measure the wall widths in the room, or at least the length of counter. In short, if you think it might be a useful measurement to us, please include it!

Measure your ceiling height in at least two places to get an accurate idea of the height and make note of it on your paperwork.

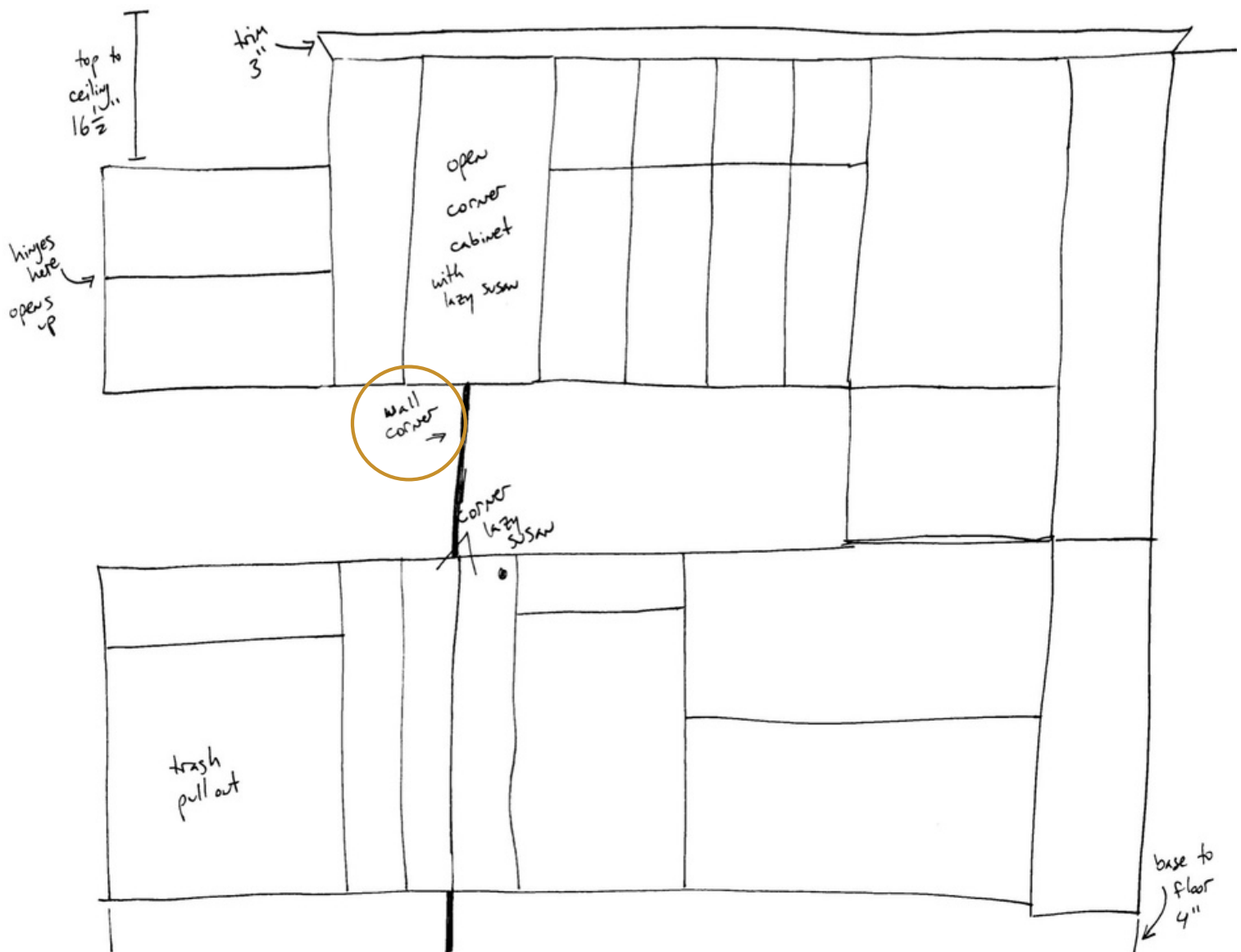


STEP 3: DRAW A FRONT VIEW



Draw a front view of the cabinetry. It helps if each wall is on it's own piece of paper, otherwise make sure to note where the corner of the room is.

Make note of any special cabinetry, like a lazy susan or trash pullout.



Don't forget to include measurements around the area, like the height between the counter and upper cabinets, or the distance between cabinets and a window.

STEP 4: MEASURE FOR NEW CABINETY

For NEW cabinetry, we'll need full height, width, and depth.

Be as accurate as you can, but know that we usually come measure again in person before placing any orders.



Full Height 35"



Inside Depth 12"



Full Width 14"



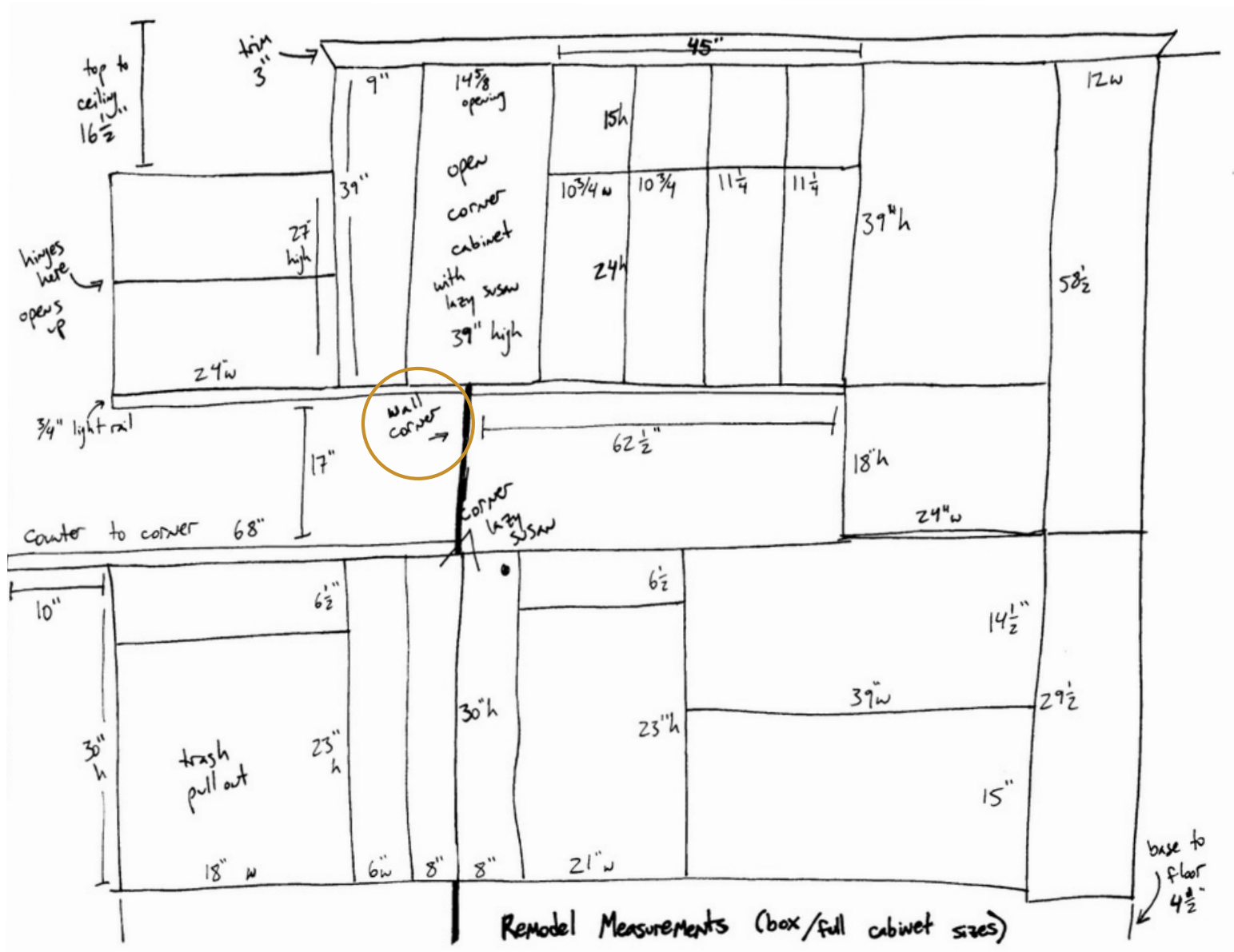
Opening Width 15 1/4"



STEP 4: MEASURE FOR NEW CABINETS

For NEW cabinetry, mark down the measurements of each box, or set of cabinets. For instance the width of the sink base, including the doors and space to the next cabinet.

It might look a little crowded, but that's okay! Just make sure it's clear which measurements go to which cabinet. You could also label each cabinet and put the measurements on a separate piece of paper, whatever makes the most sense for you.



STEP 4: MEASURE

If you would rather print a photo of the kitchen and write the dimensions on top, that's great too!

Just make sure it is easy to read the measurements before you send it to us.



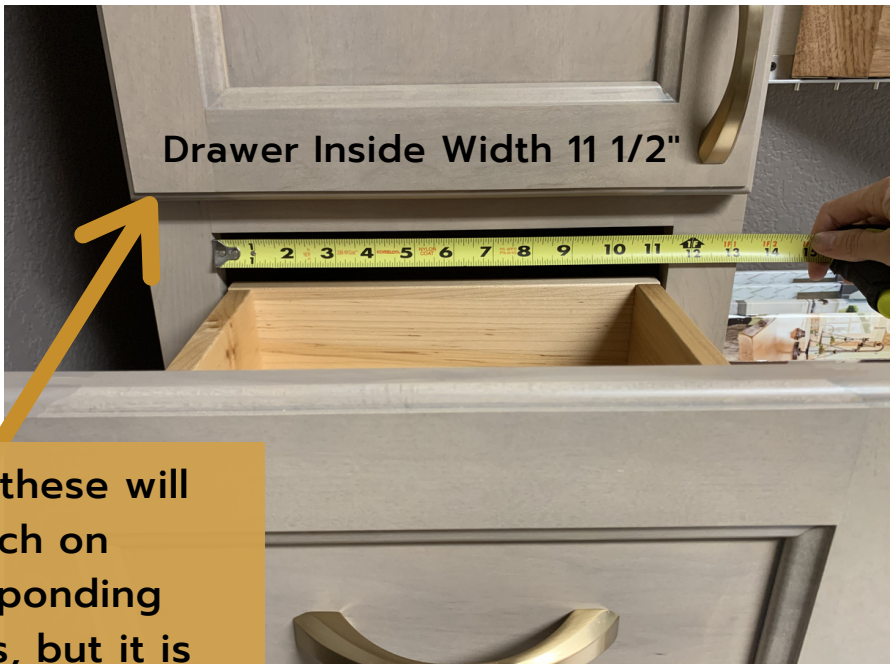
STEP 4: MEASURE FOR REFACE CABINETRY

For REFACE cabinetry, we'll need the inside opening of each door and drawer, as well as the depth.

Be as accurate as you can, but know that we usually come measure again in person before placing any orders.

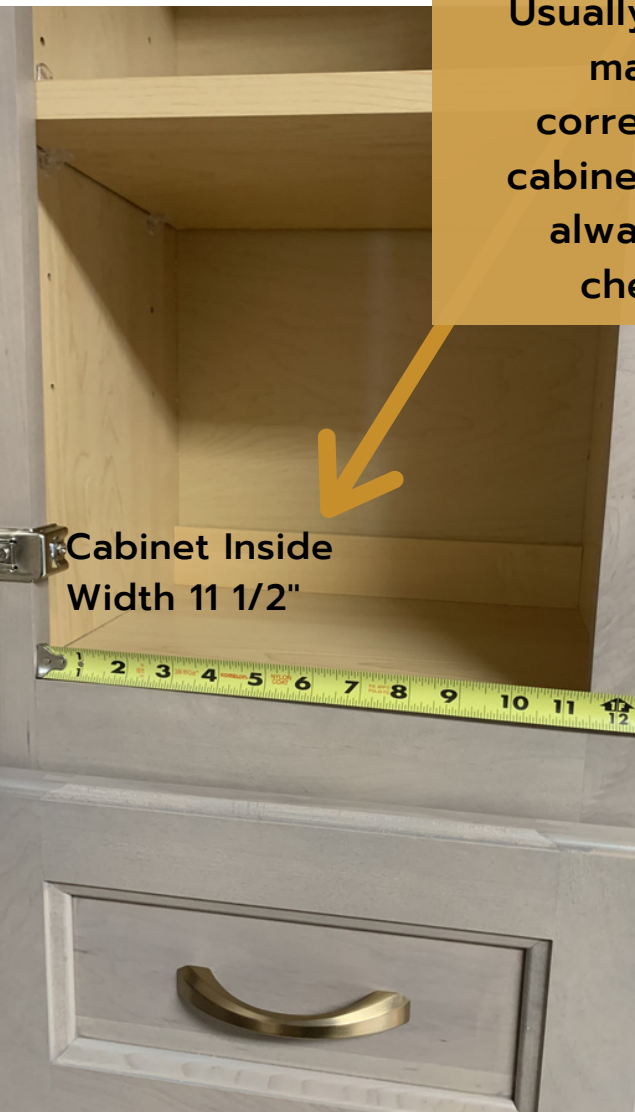


Cabinet Inside
Height 32 1/2"



Drawer Inside Width 11 1/2"

Usually these will match on corresponding cabinets, but it is always worth checking!



Cabinet Inside
Width 11 1/2"



Drawer Height 7"



Inside Depth 12"

STEP 4: MEASURE FOR REFACE CABINETS



For REFACE cabinetry, mark down the measurements of the inside of each door opening and drawer opening. Make sure to note somewhere on the page that it is in inside dimensions.

It might look a little crowded, but that's okay! Just make sure it's clear which measurements go to which cabinet. You could also label each cabinet and put the measurements on a separate piece of paper, whatever makes the most sense for you.



HELPFUL TIPS



- Do your best to make a neat drawing, but don't worry if it's not "perfect"!
- Make note of anything special about the cabinets, like glass panel size or unusual wall angles
- We don't judge cleanliness in photos, just make sure that the area is clear enough to see important details of the space.
- Before placing any orders we always come to do a final measurement to make sure everything is correct, so don't worry that your measurements aren't 100% exact. We just want to be able to get you a ballpark quote and help move forward with getting you your new cabinets!



Send any photos and
drawings to: info@mtnkitchens.com

Include any other information you think is
relevant to the project, and we'll be in
touch soon!

**Thank you for your patience
and understanding as we
figure this out together!**
